

PROFINET-INSpektor® NT

Function

The **PROFINET-INSpektor® NT** is a passive data collector that analyzes telegram traffic in PROFINET and Ethernet networks in terms of events like

- Update times
- Telegram jitter
- Telegram gaps
- Error telegrams
- Network utilization
- Broad/multicast loads
- Diagnostic messages and device failures

This information reflects the current status of the communication quality on the PROFINET and forms the basis for condition-based maintenance. By storing data in the device, events in the network can be tracked and evaluated directly via the display or in detail via the integrated web server.

The installation location of the PROFINET-INSpektor® NT is recommended as a fixed installation within the network connection between the automation device (controller) and the first IO device or switch, as the majority of communication typically takes place within this connection.

The active scan function of the PROFINET-INSpektor® NT allows the user to record and document an up-to-date topology plan of a PROFINET/Ethernet network, including all important device information, at any time. This scan can then be evaluated with the PROscan® Active software or used cyclically with PROmanage® NT for permanent network monitoring.

Technical data

- Network connection
 - PROFINET: 2 x 10/100Base-T RJ45 ports
 - Web interface: 2 x 10/100/1000Base-T RJ45 ports
- Power supply: 24V DC $\pm 10\%$
- Max. Current consumption: 350mA
- Max. Power loss: 8.5W
- Dimensions (H x W x D): 123 x 105 x 129mm incl. top-hat rail clip
- Weight: 0.84 kg
- Housing: Aluminium, anodized
- Operating temperature: +5°C to +55°C
- Storage temperature: -20°C to +70°C
- Humidity: 10% to 90%, non-condensing
- Protection class: IP20
- Mounting: TS35 DIN top-hat rail

General data

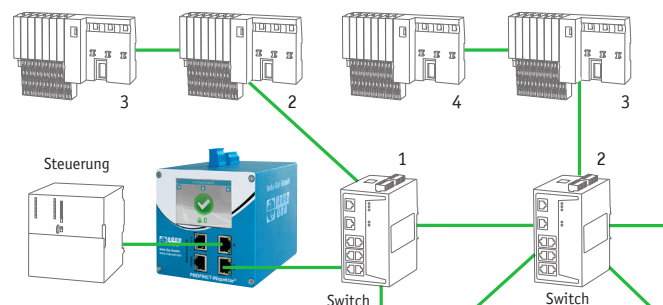
- PROFINET analysis: IRT, RT, RT via UDP/IP
- Alerting: relay, SNMP trap, e-mail, TCP event, MQTT message
- Protocols / services: HTTP, HTTPS, OPC UA Server, SNMPv1, SNMPv2, REST-API, DHCP Client, SMTP client, SNTp client, LLDP, MQTT
- Network scan incl. topology
- Acceptance mode

Scope of delivery StarterKIT

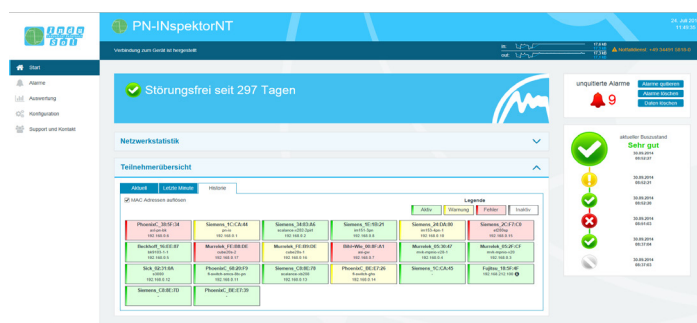
- PROFINET-INSpektor® NT
- PROmanage® NT (24 ports)
- Power supply unit
- Patch cable
- Carrying case



PROFINET-INSpektor® NT



PROFINET-INSpektor® NT „Its position in network“



Web interface

Ordering details

PROFINET-INSpektor® NT

PROFINET-INSpektor® NT StarterKIT

Art. No.

124030100

124030120

Network management software PROmanage® NT

Function

PROmanage® NT makes it possible for you to analyze and evaluate information on the condition of fieldbus systems and industrial networks and store it on the long haul. The information is transmitted to a central point to provide you an overview. Thus it is possible to get from this central software at any time information on the condition of the controlled fieldbus, incl. Ethernet. PROmanage® NT queries all port statistics of the manageable switches and the results of the decentralised data collector (INSpektors®) at minute intervals to evaluate them and displays them graphically. With this sophisticated analytical technique irregularities can be detected immediately and adjustable thresholds trigger an alarm. Through this statistics function the data are available to the minute up to one year. Thus historic events, such as sporadic failures, can be tracked at any time and used for cause study.

Network data

The user interface is arranged so as to make it easy for the user to find information. It can be tailored to meet your needs and you can use two screens. The graphical display provides a comparison of several parameters and can handle several devices, e.g. you can correlate parameters such as device temperature and device failures of different devices so as to be able to identify the cause of disturbances.

Chronicle

The chronicle of the network provides rapid information which is easy to read on current network status, periods of time in which your network operates free of errors and point in time when disturbances occurred (with time stamp).

Event messages

Integrated management of threshold values allows the user to specify the limiting values for network parameters. As soon as these threshold values are reached, an entry complete with time stamp is written automatically into the event log. Just one click is needed to retrieve network disturbances from the event log.

Alerting

The implemented alarm management System provides automated message forwarding. The user selects the desired medium (email, messaging services, OPC, SNMP) to transfer messages in a timely manner directly to the appropriate area of responsibility, thereby shortening action times and avoiding unnecessary plant breakdowns.

System requirements

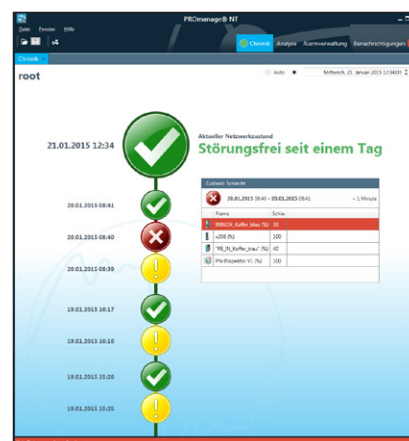
Following operating systems are supported:
 Microsoft® Windows® 7, 8, 10
 Microsoft® Windows® Server 2008, 2012, 2016 and 2019

Depending on the number and extent of the attached devices apply to following system requirements:

Number of licence ports	Number of data cores	RAM	Hard disk drive space required
bis 480 Ports	4	8 GB	100 GB
bis 960 Ports	4	16 GB	200 GB
bis 2000 Ports	8	32 GB	400 GB



Network management software PROmanage® NT



Chronik

Ordering details	Art. No.
PROmanage® NT 80 Ports *	117000104
PROmanage® NT 160 Ports *	117000105
PROmanage® NT 320 Ports *	117000106
PROmanage® NT 480 Ports *	117000107
PROmanage® NT 960 Ports *	117000110
Upgrade PROmanage® V23 to NT	117000100
OPC Server	112010006

Other licences on request.

* The licence defines the maximum number of network Ports or devices retrieved simultaneously. (Ethernet Switch: number of network port = number of licence port, 1 PN-INSpektor® NT= 16 Ports, sonstiger INSpektor® = 8 Ports)